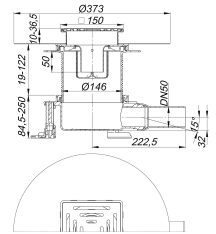


floor drain DallDrain Select Vario, DN 50, 150 x 150 mm

Part number: 517050
 GTIN: 4001636517050
 Rebate group: 6



Description:

floor drain DallDrain Select Vario, DN 50, 150 x 150 mm
 as per DIN EN 1253

Floor drain including raising piece DallDrain Vario and grating DallDrain Select with stainless steel grate in stainless steel frame. Pre-assembled set consisting of parts no. 517173 + 517241 + 517210 + 517340. Side outlet DN 50, with ball joint, adjustable from 0–15 degrees.

Design:

- Stainless steel grate and frame
- Raising piece with backflow seal, can be shortened 19–125 mm
- Integrated screed anchoring
- Flexible, click-in sealing sleeve for secure connection to bonded and sheet waterproofing conforming to DIN 18534
- Fully removable, two-piece trap insert and rodding eye, 50 mm water seal (conforming to DIN EN 1253)
- Temporary blanking plate
- Three sound-insulated mounting feet for fixing and height adjustment 101 – 372 mm
- Grating laterally adjustable +/- 5 mm
- Spigot can be shortened for floorings 10 – 36 mm (including adhesive)

MATERIAL

Polypropylene drain body, outlet and raising piece, highly impact-resistant; 1.4301 stainless steel grate, load class K 3 (300 kg); spigot in ABS, frame in 1.4301 stainless steel

Can be used with sound insulation mat DallDrain (part no. 517326) and

mounting aid DallDrain (part no. 517319).

Spare parts:

517340 mounting feet DallDrain